

Chapter 1: The Scales (one octave)

Major

1-1 C

1-2 F

1-3 Bb

1-4 Eb

1-5 Ab

1-6 Db

1-7 F#

1-8 B

1-9 E

1-10 A

1-11 D

1-12 G

1-13

Play exercises 1-12 as one continuous exercise. Shoot for mm. = 80.

Harmonic Minor

1-14 a

1-15 d

1-16 g

1-17 c

1-18 f

1-19 bb

1-20 d#

1-21 g#

1-22 c#

1-23 f#

1-24 b

1-25 e

1-26

Play exercises 14-25 as one continuous exercise. Goal tempo: mm. =80

Melodic Minor

1-27 a



1-28 d



1-29 g



1-30 c



1-31 f



1-32 bb



1-33 d#



1-34 g#



1-35 c#



1-36 f#



1-37 b



1-38 e



1-39

Play exercises 27-38 as one continuous exercise. Goal tempo: mm. = 80

Diminished (Octatonic)

1-40 *c*

1-41 *f*

1-42 *bb*

1-43 *eb*

1-44 *ab*

1-45 *db*

1-46 *f#*

1-47 *b*

1-48 *e*

1-49 *a*

1-50 *d*

1-51 *g*

1-52

Play exercises 40-51 as one continuous exercise. Goal tempo: mm. = 80

Whole-tone

1-53 C

1-54 F

1-55 Bb

1-56 Eb

1-57 Ab

1-58 Db

1-59 F#

1-60 B

1-61 E

1-62 A

1-63 D

1-64 G

1-65

Play exercises 53-64 as one continuous exercise. Goal tempo: mm. = 80

1-66



1-67



1-68



1-69



1-70



1-71



1-72



1-73



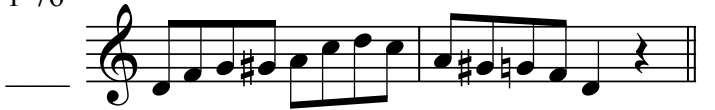
1-74



1-75



1-76



1-77




1-78

Play exercises 66-77 as one continuous exercise. Goal tempo: mm. = 80

Major Pentatonic

1-79



1-80



1-81



1-82




1-83



1-84



1-85



1-86



1-87



1-88



1-89



1-90



1-91

Play exercises 79-90 as one continuous exercise. Goal tempo: mm. = 80

1-92



1-93



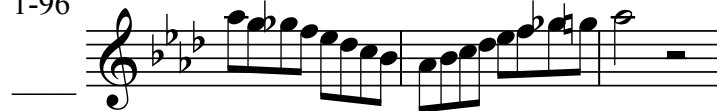
1-94



1-95



1-96



1-97



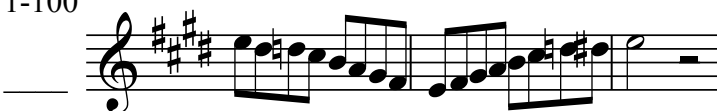
1-98



1-99



1-100



1-101



1-102



1-103



1-104

Play exercises 92-103 as one continuous exercise. Goal tempo: mm. = 80

Bebop (major)

1-105



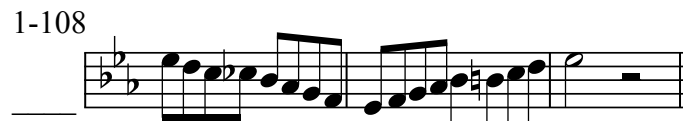
1-106



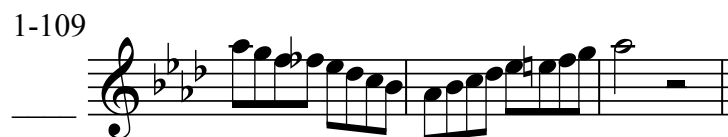
1-107



1-108




1-109



1-110



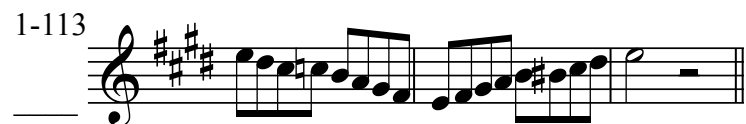
1-111



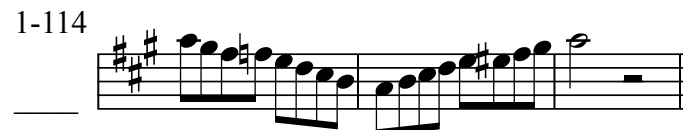
1-112




1-113



1-114



1-115



1-116



1-117

Play exercises 105-116 as one continuous exercise. Goal tempo: mm. = 80

—

10

Augmented (minor 3rd/half step)

1-118



1-119



1-120



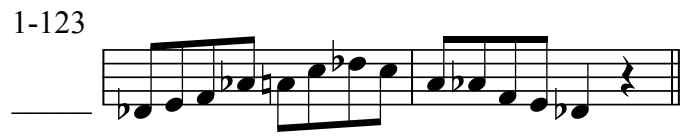
1-121



1-122



1-123



1-124



1-125



1-126



1-127



1-128



1-129



Chromatic (2-octave, C-C)

1-130

